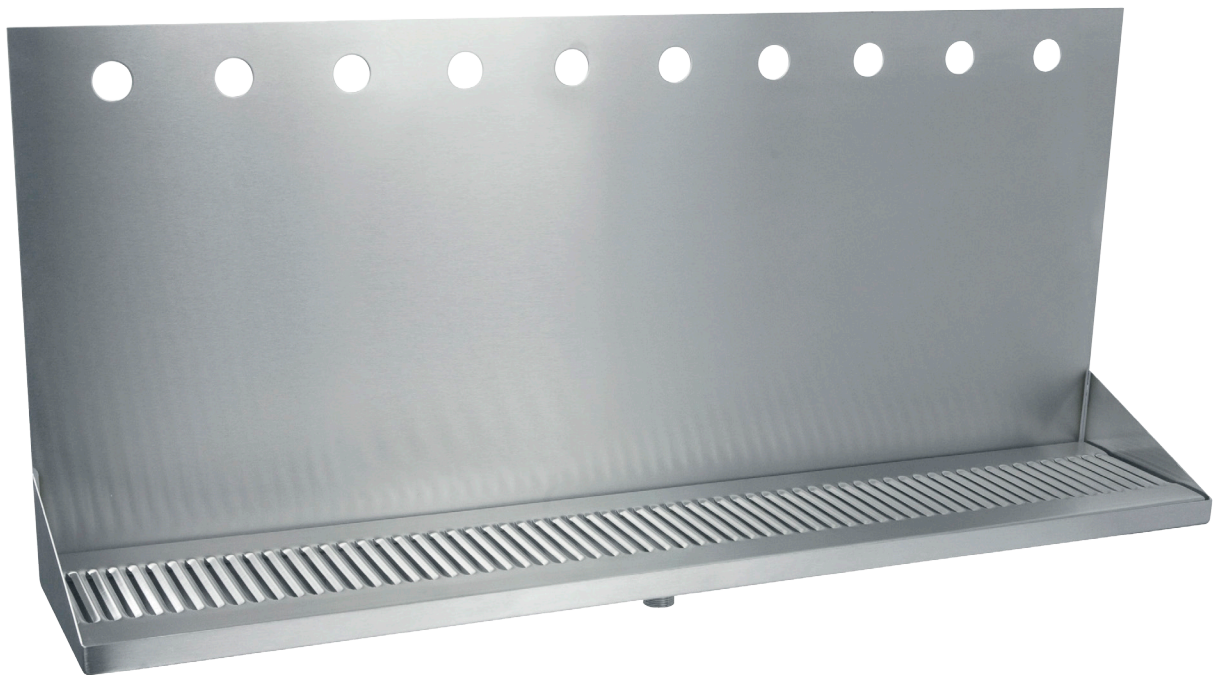


- Easy installation: beverage shanks mount through and secure tray to wall
- Robust 18 gauge stainless steel construction
- Welded corners, finished smooth for safety and appearance
- Fast draining, precision louvered screen



**DP-332ELD-10-3**

# Specifications

Part No.	Faucets	Finish	Shipping Weight
DP-332ELD-10-3	10	Brushed Stainless Steel	TBD

# Dimensions

